



IDDSI

且
 严
 东
 东
 了
 七
 且
))

且

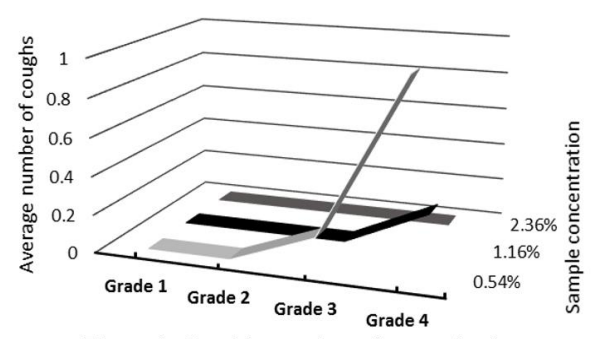


Figure 1: Coughing number when swallowing

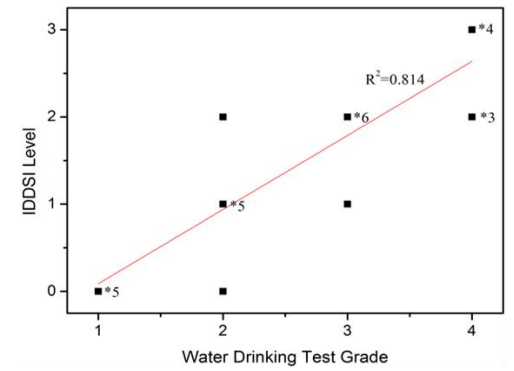


Figure 2 A plot of the IDDSI texture level against the swallowing capability as assessed by the Water Drinking Test. The number next to asterisked points represents the numbers of subjects at that same point.

Journal of Texture Studies

亲

- 了 下
- 亲下 亲 了
- 下了
- 互 了
- 互



了 2017 3 21
七

互亲 了

互
从 众
互
严

互

从



互

从

了

2016 12 7

Rammile Ettelaie

东

亲

亲

但 亲

严

亲

亲

丁

下

不

亲
亲

亲



2016.10-2017.6

- K
- *Dysphagia*
- K
- *Journal of Texture Studies*
-
- *Current Opinion in Colloid and Interface Sciences*
-
- *Trends in Food Science and Technology*
-
- *Journal of Texture Studies*
-
- *Biotribology*
- K
- *Journal of Texture Studie*
- K K
- *Journal of Texture Studies*
- K K
- *Journal of Texture Studies*
-
- K J K K
- *Dysphagia*
-
- K
-
- *Oral Mechanisms of Mouthfeel*
- K K
- *Nutrition and Functional Foods for Healthy Aging*